



Insulation Upgrade Program Reduces Fuel Costs and Increases Process Efficiency at Georgia-Pacific Plant

Information from NAIMA

This fact sheet discusses the significant results realized by Georgia-Pacific when they decided to insulate steam lines with mineral fiber insulation at their plywood plant in Madison, Georgia.

The Plywood Plant

Built in 1979, the Georgia-Pacific plant at Madison uses Loblolly pine to manufacture the plywood. The tree is abundant in the area. Most of the trees harvested are from within a 180 mile radius of the mill. About 20% of the trees are grown on land owned by Georgia-Pacific and about 80% come from other privately owned land. The plant runs 24 hours, 7 days a week and employs approximately 400 people.

The Process

The process of making the veneer layers in a plywood panel begins when logs arrive at the mill in sections. They are

immediately debarked and soaked in water at 180°F for six hours. This softens the logs and enables them to peel better. The softening process also allows the logs to pass through the lathe much easier and delivers the veneer layers at the right temperature to the dryer where they are dried at temperatures of 405°F

From the dryers, the veneer layers go to the glue line where layers are sandwiched with glue and then pressed into a panel. From there the panels go to the saw line for trimming before banding and shipping.

The Situation

Because the steam lines to the dryer were uninsulated, heat was radiating out and millions of Btu were being lost. The heat loss resulted in a loss of pressure and a reduction in temperature as the plywood moved down the line. The increased drying time needed slowed the process down significantly.

About 3E Plus



Industry can save millions of dollars and Btu —

and pounds of CO₂ emissions by calculating and installing the most economic thickness of insulation on pipes, tanks and equipment.

The questions become:

- n How much should I insulate?*
- n How much will the insulation package save vs. other equipment investments?*
- n What's the payback period?*

NAIMA's 3E Plus is an insulation computer thickness program that provides the user with a simplified and systematic method for determining adequate insulation thickness.

You can download NAIMA's 3E Plus program and manual at <http://www.pipeinsulation.org>.

Goal: Reduce Dependence on Purchased Fuel

While Georgia-Pacific wanted to insulate the steam lines for energy conservation, improved process efficiency and personnel protection, they also wanted the insulation for a more pragmatic reason – to eliminate dependence on purchased fuel. The plant normally uses wood bark and wood by-products for fuel. However, at certain times of the year the bark is too thin for use as adequate fuel so additional fuel had to be purchased from an outside source.

Determining the Thickness of Insulation

Once the decision was made to insulate the steam lines, a computer program called 3E Plus created by the North American Insulation Manufacturers Association (NAIMA) was used to determine the insulation thickness required to insulate the 1500 feet of saturated steam lines with temperatures operating at 437°F.

Computer projections estimated that insulation would significantly reduce the heat (Btu) loss along the steam lines leading to the dryers. This reduction in heat loss alone could increase the operating temperature by 15° and maintain the process temperature along the length of the lines. The combination of a higher temperature in the dryer lines and a more consistent process line temperature would result in a faster and more efficient veneer plywood process.

Insulation Installed

The Madison plant installed 2" thick fiber glass pipe insulation. Two inches is the thickness needed to reduce heat loss, maintain process temperature and bring the outside surface temperatures of the pipes down for personnel protection. Insulation footage was as follows: 120 ft. of insulation on the 12" process line; 200 ft. on the

8" process line; 220 feet on the 6" process line; 80 feet on the 4" process line; and 350 feet on the 1-1/2" process line.

Immediate Results

n Improved Process Efficiency

The lines to the mill's four dryers have all been insulated, and according to Darryl Jackson, boiler superintendent at the Madison plant, "Gauging the increase in throughput has proven to be a bit more complex than we first thought. A more accurate gauge of the effectiveness of the insulation is the steam usage. The insulation has allowed us to cut our steam usage by approximately 6,000 lbs./hour. This is equivalent to saving about 18 tons of fuel per day. I can track these numbers with a totalizer so I know exactly what the dryers are pulling at any given time."

n Dependence on Outside Fuel Eliminated

By insulating the piping, Georgia-Pacific has been able to eliminate the purchase of fuel. Says Jackson, "Currently we are selling some of our excess fuel to a paper company."

n Reduction in Pollutants

By reducing fuel consumption, the Madison plant has been able to reduce the amount of ash being generated and landfilled. Georgia-Pacific

estimates that the energy saved through insulation has reduced the amount of CO₂ emissions by 5 to 6%.

n Increased Personnel Protection

Prior to installing the insulation, the piping in the Madison plant had a surface temperature of approximately 400°F. With insulation, the surface temperature has been reduced to approximately 85°F — a safer level for personnel protection.

Additional Savings

In addition to insulating the steam lines, Georgia-Pacific

also replaced 70 steam traps. According to Jackson, “We’ve probably gained 10% condensate return from replacing the thermal dynamic traps. By increasing the condensate by 10% our savings will be approximately \$86,000 per year based on an \$8 per ton fuel cost.”

Total Energy Savings

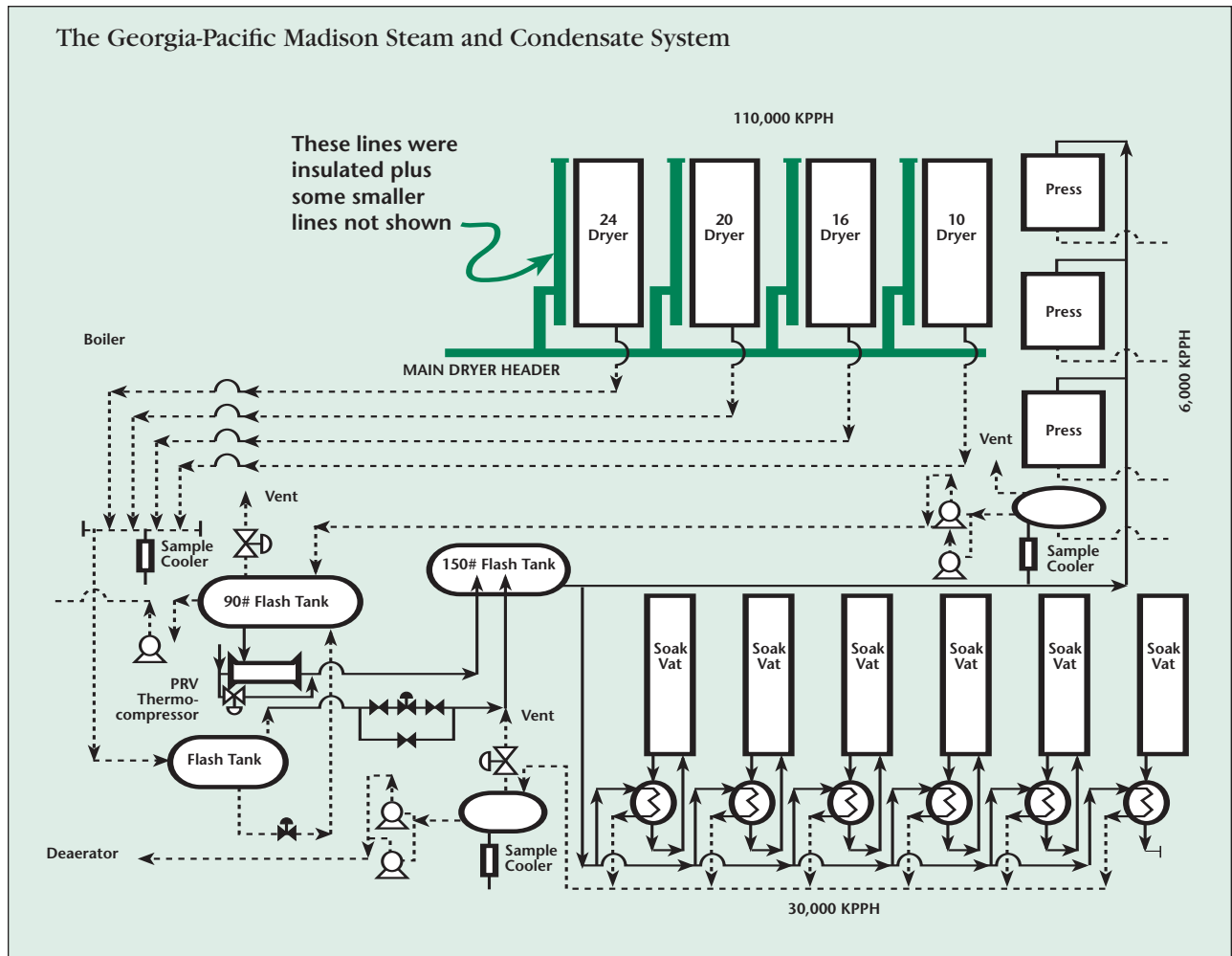
Georgia-Pacific estimates that the amount of energy saved by insulating the steam lines to the dryers and installing new steam traps is approximately 7,212,000 Btu per hour.

Payback on Initial Investment

Calculating how long it takes to pay back an initial insulation investment is an integral part of Georgia-Pacific’s energy management program. Based on the results realized, the payback period at Madison was approximately six months.

No Downtime Required to Install Insulation

A major advantage of using mineral fiber insulation to insulate the steam lines was that no downtime was required. Several areas that could not be insulated while the line was run-



Georgia-Pacific's Conservation Philosophy

Among Georgia-Pacific's environmental goals and principles is conservation and sustainable use of resources, including energy efficiency. Georgia-Pacific is committed to reducing the amount of fossil fuel and purchased electricity consumed per unit for product produced. The company seeks to improve efficiency through careful planning and increased use of self-generated and renewable fuels.

ning were insulated on scheduled down days. Says Jackson, "We do dryer maintenance once a week so the dryer is shut down during that time. That's when the insulation was installed on those areas that couldn't be accessed while the dryer was running."

About NAIMA

NAIMA
44 Canal Center Plaza
Suite 310
Alexandria, VA 22314
Tel: 703/684-0084
Fax: 703/684-0427
E-mail: insulation@naima.org
Website: <http://www.naima.org>

NAIMA
Commercial & Industrial Committee
Members

Johns Manville
P.O. Box 5108
Denver, CO 80217-5108
800/654-3103

Knauf Fiber Glass
240 Elizabeth Street
Shelbyville, IN 46176
800/ 835-4434

Owens Corning
One Owens Corning Parkway
Toledo, OH 43659
800/GET-PINK

Rock Wool Manufacturing Co.
203 North 7th Street
Leeds, AL 35094
205/699-6121